



75 Burden Drive, Bishopdown, Salisbury, Wiltshire, SP1 3QG

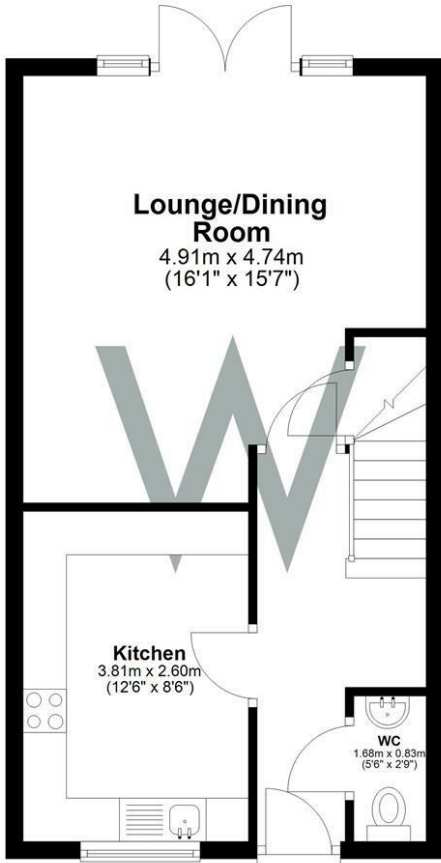
This prime semi-detached three-bedroom house in the new Riverdown Park development features a fully fitted kitchen, spacious sitting/dining room, and a sizable enclosed rear garden with gated side access and parking for two cars.

- 3 BEDROOM
- 1 BATHROOM
- SEMI-DETACHED
- MODERN BUILD
- OFF STREET PARKING
- NEWLY TURFED LAWN
- GAS CENTRAL HEATING
- EPC BAND B

£1,250 PCM

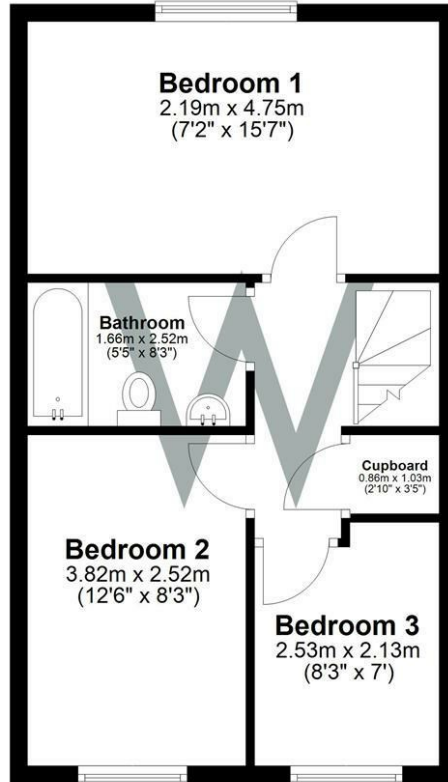
Ground Floor

Approx. 41.4 sq. metres (445.5 sq. feet)



First Floor

Approx. 37.3 sq. metres (401.8 sq. feet)



Total area: approx. 78.7 sq. metres (847.3 sq. feet)

WHITES

Castle Chambers, 47 Castle Street, Salisbury,
Wiltshire, SP1 3SP
Tel: 01722 336422/Option 2
www.hwwhite.co.uk
email: lettings-management@hwwhites.co.uk

Energy Efficiency Rating		Current	Potential
Very energy efficient - lower running costs			
(92 plus) A			96
(81-91) B		84	
(69-80) C			
(55-68) D			
(39-54) E			
(21-38) F			
(1-20) G			
Not energy efficient - higher running costs			
England & Wales		EU Directive 2002/91/EC	

Environmental Impact (CO ₂) Rating		Current	Potential
Very environmentally friendly - lower CO ₂ emissions			
(92 plus) A			
(81-91) B			
(69-80) C			
(55-68) D			
(39-54) E			
(21-38) F			
(1-20) G			
Not environmentally friendly - higher CO ₂ emissions			
England & Wales		EU Directive 2002/91/EC	